



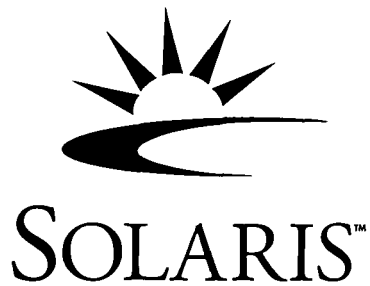
---

## Solaris™ 7 Installation Supplement

---

Sun Microsystems, Inc.  
901 San Antonio Road  
Palo Alto, CA 94303  
U.S.A. 650-960-1300

Part No. 806-0221-10  
May 1999, Revision A



Copyright 1999 Sun Microsystems, Inc. 901 San Antonio Road, Palo Alto, California 94303-4900 U.S.A. All rights reserved.

This product or document is protected by copyright and distributed under licenses restricting its use, copying, distribution, and decompilation. No part of this product or document may be reproduced in any form by any means without prior written authorization of Sun and its licensors, if any. Third-party software, including font technology, is copyrighted and licensed from Sun suppliers.

Parts of the product may be derived from Berkeley BSD systems, licensed from the University of California. UNIX is a registered trademark in the U.S. and other countries, exclusively licensed through X/Open Company, Ltd.

Sun, Sun Microsystems, the Sun logo, docs.sun.com, Power Management, AnswerBook2, Solaris 7 Maintenance Update, Solaris Web Start, JumpStart, Solstice AdminSuite, NFS, AnswerBook, and Solaris are trademarks, registered trademarks, or service marks of Sun Microsystems, Inc. in the U.S. and other countries. All SPARC trademarks are used under license and are trademarks or registered trademarks of SPARC International, Inc. in the U.S. and other countries. Products bearing SPARC trademarks are based upon an architecture developed by Sun Microsystems, Inc.

The OPEN LOOK and Sun™ Graphical User Interface was developed by Sun Microsystems, Inc. for its users and licensees. Sun acknowledges the pioneering efforts of Xerox in researching and developing the concept of visual or graphical user interfaces for the computer industry. Sun holds a non-exclusive license from Xerox to the Xerox Graphical User Interface, which license also covers Sun's licensees who implement OPEN LOOK GUIs and otherwise comply with Sun's written license agreements.

**RESTRICTED RIGHTS:** Use, duplication, or disclosure by the U.S. Government is subject to restrictions of FAR 52.227-14(g)(2)(6/87) and FAR 52.227-19(6/87), or DFAR 252.227-7015(b)(6/95) and DFAR 227.7202-3(a).

DOCUMENTATION IS PROVIDED "AS IS" AND ALL EXPRESS OR IMPLIED CONDITIONS, REPRESENTATIONS AND WARRANTIES, INCLUDING ANY IMPLIED WARRANTY OF MERCHANTABILITY, FITNESS FOR A PARTICULAR PURPOSE OR NON-INFRINGEMENT, ARE DISCLAIMED, EXCEPT TO THE EXTENT THAT SUCH DISCLAIMERS ARE HELD TO BE LEGALLY INVALID.

---

Copyright 1999 Sun Microsystems, Inc. 901 San Antonio Road, Palo Alto, California 94303-4900 Etats-Unis. Tous droits réservés.

Ce produit ou document est protégé par un copyright et distribué avec des licences qui en restreignent l'utilisation, la copie, la distribution, et la décompilation. Aucune partie de ce produit ou document ne peut être reproduite sous aucune forme, par quelque moyen que ce soit, sans l'autorisation préalable et écrite de Sun et de ses bailleurs de licence, s'il y en a. Le logiciel détenu par des tiers, et qui comprend la technologie relative aux polices de caractères, est protégé par un copyright et licencié par des fournisseurs de Sun.

Des parties de ce produit pourront être dérivées du système Berkeley BSD licenciés par l'Université de Californie. UNIX est une marque déposée aux Etats-Unis et dans d'autres pays et licenciée exclusivement par X/Open Company, Ltd.

Sun, Sun Microsystems, le logo Sun, docs.sun.com, Power Management, AnswerBook2, Solaris 7 Maintenance Update, Solaris Web Start, JumpStart, Solstice AdminSuite, NFS, AnswerBook, et Solaris sont des marques de fabrique ou des marques déposées, ou marques de service, de Sun Microsystems, Inc. aux Etats-Unis et dans d'autres pays. Toutes les marques SPARC sont utilisées sous licence et sont des marques de fabrique ou des marques déposées de SPARC International, Inc. aux Etats-Unis et dans d'autres pays. Les produits portant les marques SPARC sont basés sur une architecture développée par Sun Microsystems, Inc.

L'interface d'utilisation graphique OPEN LOOK et Sun™ a été développée par Sun Microsystems, Inc. pour ses utilisateurs et licenciés. Sun reconnaît les efforts de pionniers de Xerox pour la recherche et le développement du concept des interfaces d'utilisation visuelle ou graphique pour l'industrie de l'informatique. Sun détient une licence non exclusive de Xerox sur l'interface d'utilisation graphique Xerox, cette licence couvrant également les licenciés de Sun qui mettent en place l'interface d'utilisation graphique OPEN LOOK et qui en outre se conforment aux licences écrites de Sun.

CETTE PUBLICATION EST FOURNIE "EN L'ETAT" ET AUCUNE GARANTIE, EXPRESSE OU IMPLICITE, N'EST ACCORDEE, Y COMPRIS DES GARANTIES CONCERNANT LA VALEUR MARCHANDE, L'APTITUDE DE LA PUBLICATION A REPENDRE A UNE UTILISATION PARTICULIERE, OU LE FAIT QU'ELLE NE SOIT PAS CONTREFAISANTE DE PRODUIT DE TIERS. CE DENI DE GARANTIE NE S'APPLIQUERAIT PAS, DANS LA MESURE OU IL SERAIT TENU JURIDIQUEMENT NUL ET NON AVENU.



Adobe PostScript



Please  
Recycle

# Contents

---

- Preface v
- 1. **What's New at a Glance** 1
- 2. **Installing Solaris 7 5/99 Software** 5
  - Backing Up Your System 5
  - Installing the Solaris 7 5/99 Software Release 6
    - Verifying the Installation 6
    - Using Solaris 7 as an Install Server 6
    - Installing the Solaris 7 5/99 Software Release on Diskless Clients and AutoClients From a Server 7
    - Verifying the Installation 7
  - Upgrading to the Solaris 7 5/99 Software Release 8
    - Upgrading From the Solaris 2.5.1 or 2.6 Operating Environment 8
    - Upgrading From the Solaris 7 Operating Environment 8
    - Verifying the Upgrade 11
    - Updating Diskless Clients and AutoClients From a Server After an Upgrade 11
    - Identifying the Version of Your Solaris 7 5/99 Software 12
- 3. **System Preconfiguration and Software Administration** 13
  - DNS Configuration During System Identification 13
    - Preconfiguring With the sysidcfg File 14

Using the Solaris Product Registry 15

What Is in the Product Registry? 15

Viewing Registered Software, Uninstalling, and Launching an  
Installer 18

▼ To View Registered Software 18

▼ To Uninstall Software 19

▼ To Launch an Installer From the Registry 19

# Preface

---

The *Solaris 7 Installation Supplement* provides instructions on how to install or upgrade to the Solaris™ 7 5/99 software release and how to use new installation features in the Solaris 7 5/99 and 3/99 software releases.

---

## Related Books

This supplement describes new or changed functionality in Solaris Update Releases. The information here supplements or supersedes information in the previous releases of Solaris 7 documentation sets.

You may need to refer to the following manuals when installing Solaris software:

- *Solaris 7 (SPARC™ or Intel Platform Edition) Start Here*
- *Solaris 7 (SPARC or Intel Platform Edition) Installation Library*
- *Solaris 7 5/99 Release Notes*

Solaris documentation is available on the Solaris 7 Documentation CD included with this product.

For some hardware configurations, you may need supplemental hardware-specific instructions for installing the Solaris operating environment. If your system requires hardware-specific actions at certain points, the manufacturer of your hardware has provided supplemental Solaris installation documentation. Refer to those materials for hardware-specific installation instructions.

---

# Ordering Sun Documents

The Sun Software Shop stocks select manuals from Sun Microsystems, Inc. You can purchase individual hardcopy manuals and AnswerBook2™ CDs.

For a list of documents and how to order them, visit the Software Shop at <http://www.sun.com/software/shop/>.

---

# Accessing Sun Documentation Online

The docs.sun.com<sup>SM</sup> web site enables you to access Sun technical documentation online. You can browse the docs.sun.com archive or search for a specific book title or subject. The URL is <http://docs.sun.com>.

---

# Typographic Conventions

TABLE P-1 Typographic Conventions

| Typeface or Symbol | Meaning  | Example  |
|--------------------|--|--|
| AaBbCc123          | The names of commands, files, and directories; on-screen computer output | Edit your .login file.<br>Use <code>ls -a</code> to list all files.<br><code>machine_name%</code> you have mail. |
| <b>AaBbCc123</b>   | What you type, contrasted with on-screen computer output                 | <code>machine_name%</code> <b>su</b><br>Password:  |

**TABLE P-1** Typographic Conventions (continued)

| Typeface or Symbol | Meaning  | Example  |
|--------------------|--|--|
| <i>AaBbCc123</i>   | Command-line placeholder: replace with a real name or value  | To delete a file, type <code>rm filename</code> .  |
| <i>AaBbCc123</i>   | Book titles, new words, or terms, or words to be emphasized. | Read Chapter 6 in <i>User's Guide</i> .<br>These are called <i>class</i> options.<br>You must be <i>root</i> to do this. |

---

## Shell Prompts in Command Examples

The following table shows the default system prompt and superuser prompt for the C shell, Bourne shell, and Korn shell.

**TABLE P-2** Shell Prompts

| Shell                                       | Prompt                     |
|---|----------------------------|
| C shell prompt                              | <code>machine_name%</code> |
| C shell superuser prompt                    | <code>machine_name#</code> |
| Bourne shell and Korn shell prompt          | <code>\$</code>            |
| Borne shell and Korn shell superuser prompt | <code>#</code>             |



---

## What's New at a Glance

---

This chapter highlights new features added to the Solaris 7 operating environment in the 5/99 and 3/99 releases.

**TABLE 1-1** Solaris 7 Features

| Feature  | First Released in . . . | Description   |
|--|-------------------------|---|
| Installation                                   |                         |   |
| DNS configuration during system identification | 5/99                    | Prior Solaris releases only allowed the configuration of a machine as a NIS or NIS+ client. With the Solaris 7 5/99 release, systems can be configured by the system identification utilities to be DNS clients.  |
| Product Registry                               | 3/99                    | The Solaris Product Registry is a tool to manage installed software. It allows you to: <ul style="list-style-type: none"><li>■ View a list of installed and registered software and some software attributes</li><li>■ Uninstall software</li><li>■ Browse for and launch an installer</li></ul>              |
| Patch Analyzer                                 | 3/99                    | The Patch Analyzer performs an analysis on your system to determine which (if any) patches will be removed or downgraded by upgrading from a Solaris 7 release to the Solaris 7 5/99 operating environment. This analysis can be performed either at upgrade time, or while the system is in production mode. |

TABLE 1-1 Solaris 7 Features (continued)

| Feature   | First Released in . . . | Description  |
|---|-------------------------|--|
| (Intel Platform Edition only) Added support for PAE mode  | 3/99                    | With the release of Pentium Pro, Intel introduced a mode called Physical Address Extension (PAE) on its advanced processors. PAE mode enables you to run multiple instances of databases and memory-intensive applications, and to support large numbers of online users on your machine.<br><br>For more information on PAE, see the <i>Solaris 7 5/99 Release Notes</i> .    |
| System and Network Administration (These features are described in the <i>Solaris 7 System Administration Supplement</i> .) |                         |  |
| Remote console  | 5/99                    | New system console features, including the <code>consadm</code> command, enable system administrators and service providers to remotely troubleshoot systems by dialing in to a system using a modem connected to one of the serial ports and to redirect console messages to the auxiliary device.  |
| (SPARC Platform Edition only) Dynamic reconfiguration   | 5/99                    | Dynamic reconfiguration allows the service provider to add or remove and replace hot-pluggable system boards in a running system, eliminating the time lost in rebooting. For more information, see your hardware manufacturer's documentation.  |
| Deferred access time updates on UFS file systems  | 3/99                    | New mount options, <code>dfratime</code> and <code>nodfratime</code> , enable and disable deferred access time updates on UFS file systems.  |
| Improved system boot and error message format   | 3/99                    | The system boot and error message format is improved by adding a numeric identifier, module name, and time stamp to messages generated by the <code>syslog</code> logging facility.  |
| Improved handling of cron jobs on suspended systems   | 3/99                    | When you use Power Management™ software to suspend and resume a system, there is now a check on whether cron jobs were scheduled during the time the system was suspended. If there were, the first instance of a cron job is performed when the system resumes. (This improvement was available in the Solaris 7 release and first documented in the Solaris 7 3/99 release.) |
| Developer (These features are described in the <i>Solaris 7 Software Developer Supplement</i> .)                            |                         |  |

**TABLE 1-1** Solaris 7 Features *(continued)*

| <b>Feature</b>  | <b>First Released<br/>in . . .</b> | <b>Description</b>  |
|---|------------------------------------|---|
| <i>Solaris 7 64-bit<br/>Developer's Guide</i><br>Updates      | 3/99                               | This is a list of updates in the <i>Solaris 7 64-bit Developer's Guide</i> .  |
| Updated DDI interfaces<br>for cluster-aware device<br>drivers | 3/99                               | This overview introduces the concept of device classes and the necessary interface modifications and additions for device driver writers. |



## Installing Solaris 7 5/99 Software

---

This chapter provides instructions on how to install or upgrade to the Solaris 7 5/99 software release.

The Solaris 7 5/99 release provides:

- New and updated device drivers to support new SPARC and x86 hardware
- New features as described in the supplemental documentation
- The Solaris 7 Maintenance Update™ (MU) patches integrated into the Solaris system software

For more information about the hardware requirements for this installation, see the documentation provided by the hardware manufacturer.

For more information about installation and how to use the new Solaris Product Registry, see “Using the Solaris Product Registry” on page 15.

---

## Backing Up Your System

Before you install or upgrade to the Solaris 7 5/99 software release, make sure that you back up your files. For information on backing up your system, see the *Solaris 7 (SPARC Platform Edition) Installation Library* and the *Solaris 7 (Intel Platform Edition) Installation Library*.

---

# Installing the Solaris 7 5/99 Software Release

You can use the Solaris™ Web Start, JumpStart™, Custom JumpStart, or Interactive installation method to install the Solaris 7 5/99 software release. For detailed instructions on installing Solaris software, see the *Solaris 7 (SPARC Platform Edition) Installation Library* or the *Solaris 7 (Intel Platform Edition) Installation Library* and the *Solaris Advanced Installation Guide* on the Solaris 7 Documentation CD included with this product.

## Verifying the Installation

When the installation is complete, check the following files.

To view the `install_log`, `begin.log`, and `finish.log` files:

```
# cd /var/sadm/system/logs
```

Use an editor to check the files.

## Using Solaris 7 as an Install Server

If you use Solaris 7 as an install server, you need to modify the Solaris 7 `/etc/nsswitch.conf` file before you run `add_install_client`.

1. **Go to this line in the Solaris 7 `/etc/nsswitch.conf` file:**

```
hosts: xfn nis [NOTFOUND=return] files
```

2. **Remove the `xfn` entry so that the line looks like this:**

```
hosts: nis [NOTFOUND=return] files
```

3. **Run `add_install_client` from the Solaris 7 5/99 CD.**

# Installing the Solaris 7 5/99 Software Release on Diskless Clients and AutoClients From a Server

You need to install Solstice™ AdminSuite™ 2.3 patch number 104468-06 or any subsequent revision of this patch before you add OS services to your server. You will find the patch and installation instructions at

<http://access1.sun.com/private-cgi/patch2html?README.104468-11>. If you are unable to obtain the patch from [access1.sun.com](http://access1.sun.com), go through your normal support channel.

If you are using Solstice AdminSuite with a patched Solaris release in which it is inadvisable or impossible to remove all the patches, then you need to have the following file to add OS services:

```
/var/sadm/patch/.mu_applied
```

This file is automatically created by the following MU releases:

- 2.5.1: MU3, MU4, and MU5
- 2.6: MU1 and MU2
- 7: MU1 and MU2



---

**Caution** - With this workaround, Solstice AdminSuite is unable to track all the patches in a system. Use `admclientpatch` to add or remove patches to or from the system.

---

---

**Note** - For a list of new platforms and the options that are available for this release, see the hardware manufacturer's documentation.

---

## Verifying the Installation

When the installation is complete, check the following files.

To view the `install_log`, `begin.log`, and `finish.log` files:

```
# cd /var/sadm/system/logs
```

Use an editor to check the files.

---

# Upgrading to the Solaris 7 5/99 Software Release

## Upgrading From the Solaris 2.5.1 or 2.6 Operating Environment

To upgrade, use the JumpStart, Custom JumpStart, or Interactive installation method with the Upgrade option. For detailed instructions on installing Solaris software, see the *Solaris 7 (SPARC Platform Edition) Installation Library* or the *Solaris 7 (Intel Platform Edition) Installation Library* and the *Solaris Advanced Installation Guide* on the Solaris 7 Documentation CD included with this product.

---

**Note** - During an upgrade, you may receive an informational message regarding some of the packages (including SUNWolrte, SUNWoldcv, SUNWoldte, SUNWolaud). No action is required.

An example of this message is:

```
Doing pkgadd of SUNWolrte to /
```

This message indicates an attempt to install the same architecture and version of a package that is already installed.

```
Installation of SUNWolrte was successful...
```

---

## Upgrading From the Solaris 7 Operating Environment

If you are already running the Solaris 7 or Solaris 7 3/99 operating environment and have installed patches, upgrading to the Solaris 7 5/99 software release will cause:

- Any patches supplied as part of the Solaris 7 5/99 software release to be reapplied to your system. You will not be able to back out these patches.
- Any patches previously installed on your system that are not included in the Solaris 7 5/99 software release to be removed.

To see a list of patches that will be removed, use the Patch Analyzer as described below.

If you have not installed patches on your Solaris 7 or Solaris 7 3/99 system, see "Upgrading to the Solaris 7 5/99 Software Release From the Solaris 7 Operating Environment" on page 11.

## Analyzing the Patches

The Patch Analyzer performs an analysis on your system to determine which (if any) patches will be removed by upgrading to the Solaris 7 5/99 operating environment. The Patch Analyzer is available as a script to run manually and as part of the Interactive installation method.

- If you are using the Interactive installation method to upgrade, choose the Analyze option to perform the analysis.
- If you are not using the Interactive installation method to upgrade, use the steps below to perform the analysis using the `analyze_patches` script.

After performing the analysis, refer to “Reviewing the Patch Analyzer Output” on page 10 for detailed information about the patch analysis results.

### *Running the analyze\_patches Script*

---

**Note** - To run the `analyze_patches` script, the installed system and the Solaris 7 5/99 CD (or net image) must be accessible by the script either through an NFS™ mount or using locally mounted media.

---

#### 1. Change directories to the `Misc` directory on the OS image.

- If the image is on locally mounted media on a SPARC system, type:

```
# cd /cdrom/sol_7_599_sparc/s0/Solaris_2.7/Misc
```

- If the image is on locally mounted media on an x86-based system, type:

```
# cd /cdrom/sol_7_599_x86/s2/Solaris_2.7/Misc
```

- If the image is available through an NFS mount, type:

```
# cd /NFS_mount_directory/Solaris_2.7/Misc
```

#### 2. Run the `analyze_patches` script:

```
# ./analyze_patches
```

The options listed in Table 2-1 can be used on the command line.

**TABLE 2-1** Command-Line Options for `analyze_patches`

| Option                      | Description  |
|-----------------------------|--|
| <code>-R rootdir</code>     | <code>rootdir</code> is the root of the installed system. It defaults to <code>/</code> .  |
| <code>-N netdir</code>      | <code>netdir</code> is the path to the root of the OS image to be installed. It defaults to <code>/cdrom/cdrom0</code> . It should point to the directory containing the <code>Solaris_2.7</code> directory. You must use this option if running the <code>patch_analyzer</code> from an NFS mount.  |
| <code>-D databasedir</code> | If the script is invoked from a directory other than the <code>/Misc</code> directory on the OS image, the program will not find the database it uses for patch analysis. Use the <code>-D</code> option to supply the path to the database. Without this database, contained in the <code>/Solaris_2.7/Misc/database</code> on the OS image, the script will not work properly. |

## *Reviewing the Patch Analyzer Output*

After performing the analysis, use these steps to review the output.

### **1. Review the output of the `analyze_patches` script.**

- The Patch Analyzer provides a list of patches that will be removed, downgraded, accumulated, or obsoleted by other patches. Patch accumulations are similar to patch upgrades. The accumulated patch is removed and its fixes are delivered by a new patch. Messages such as the following are shown:

```
Patch 105644-03 will be removed.  
Patch 105925 will be downgraded from -02 to -01.  
Patch 105776-01 will be accumulated/obsoleted by patch 105181-05.
```

- If the Patch Analyzer program does not provide a list, no action will be taken against any patches previously installed on your system.
- ### **2. Decide if patch replacements and deletions are acceptable.**
- If the patch replacements and deletions by the Solaris 7 5/99 software release are acceptable, continue to the section “Upgrading to the Solaris 7 5/99 Software Release From the Solaris 7 Operating Environment.”
  - If the patch replacements and deletions by the Solaris 7 5/99 software release are not acceptable, do not upgrade using the Solaris 7 5/99 CD. You may use

the Solaris 7 MU2 CD and *Solaris 7 Maintenance Update 2 Release Notes* to install the patches on your Solaris 7 system.

## Upgrading to the Solaris 7 5/99 Software Release From the Solaris 7 Operating Environment

To upgrade, use the JumpStart, Custom JumpStart, or Interactive installation method with the Upgrade option. For detailed instructions on installing Solaris software, see the *Solaris 7 (SPARC Platform Edition) Installation Library* or the *Solaris 7 (Intel Platform Edition) Installation Library* and the *Solaris Advanced Installation Guide* on the Solaris 7 Documentation CD included with this product.

---

**Note** - During an upgrade, you may receive an informational message regarding some of the packages (including SUNWolrte, SUNWoldcv, SUNWoldte, SUNWolaud). No action is required.

An example of this message is:

```
Doing pkgadd of SUNWolrte to /
```

This message indicates an attempt to install the same architecture and version of a package that is already installed.

```
Installation of SUNWolrte was successful...
```

---

## Verifying the Upgrade

When the upgrade is complete, check the `upgrade_log` file to verify the installation.

```
# cd /var/sadm/system/logs
```

Use an editor to check these files.

## Updating Diskless Clients and AutoClients From a Server After an Upgrade

You need to install Solstice AdminSuite 2.3 patch number 104468-06 or any subsequent revision of this patch before you add OS services to your server. You will find the patch and installation instructions at

<http://access1.sun.com/private-cgi/patch2html?README.104468-11>. If you are unable to obtain the patch from `access1.sun.com`, go through your normal support channel.

If you are using Solstice AdminSuite with a patched Solaris release in which it is inadvisable or impossible to remove all the patches, then you will need to have the following file to add OS services:

```
/var/sadm/patch/.mu_applied
```

This file is automatically created by the following MU releases:

- 2.5.1: MU3, MU4, and MU5
- 2.6: MU1 and MU2
- 7: MU1 and MU2



---

**Caution** - With this workaround, Solstice AdminSuite is unable to track all the patches in a system. Use `admclientpatch` to add or remove patches to or from the system.

---

## Identifying the Version of Your Solaris 7 5/99 Software

To identify the version of your Solaris 7 5/99 software:

```
# cat /etc/release
```

## System Preconfiguration and Software Administration

---

This chapter describes new system configuration functionality and the Solaris Product Registry tool.

---

**Note** - For the most up-to-date man pages, use the `man` command. The Solaris 7 5/99 man pages include new feature information not found in the *Solaris 7 Reference Manual AnswerBook™*.

---

---

## DNS Configuration During System Identification

The system identification utilities have been updated in the Solaris 7 5/99 software release. This section supplements installation information in the *Solaris Advanced Installation Guide*.

Prior to the Solaris 7 5/99 software release, the system identification utilities were only able to configure a system as either a NIS client or a NIS+ client. With the Solaris 7 5/99 release, these utilities are now also able to configure a system as a DNS client. You may specify that the system is to be a DNS client interactively or through the `sysidcfg` file. At this time, you cannot specify DNS through the `add_install_client` command.

The system identification utilities attempt to automatically determine configuration information, using data from a variety of sources. They first look for a `sysidcfg` file. If they cannot find the needed information in the `sysidcfg` file, they attempt to automatically detect the data using the network. In the case of name service

configuration, the system identification utilities attempt to automatically locate a name service, unless the name service type and configuration is specified in the `sysidcfg` file. The utilities first attempt to automatically detect a NIS+ server. If a NIS+ server is not found, they look for a NIS server. If a NIS server is not found, the utilities interactively query for the configuration information. It is not currently possible to automatically detect a DNS server.

## Preconfiguring With the `sysidcfg` File

The `sysidcfg` file preconfigures system identification information through a set of keywords (see Table 3-1) that specify the pieces of information you want to preconfigure. See the *Solaris Advanced Installation Guide* for more information about the use of the `sysidcfg` file, including a complete list of available keywords.

The `name_service` keyword has been augmented to allow the specification of DNS as an available name service. This augmented keyword is described in Table 3-1.

**TABLE 3-1** `name_service` Keyword

| Configuration Information              | Platform | Keywords  | Where to Find Values/Example   |
|--|----------|---|--|
| Name service, domain name, name server | All      | <code>name_service=NIS, NIS+, DNS, NONE</code><br><br>Options for NIS and NIS+:<br><code>{domain_name=domain_name name_server=hostname(ip_address)}</code>  | <code>name_service=NIS</code><br><code>{domain_name=west.arp.com name_server=timber(129.221.2.1)}</code><br><br><code>name_service=NIS+</code><br><code>{domain_name=west.arp.com. name_server=timber(129.221.2.1)}</code>                                 |
|  |          | Options for DNS:<br><code>{domain_name=domain_name name_server=ip_address,ip_address, ip_address (three maximum) search=domain_name, domain_name,domain_name, domain_name,domain_name, domain_name (six maximum, total length less than or equal to 250 characters)}</code> | <code>name_service=DNS</code><br><code>{domain_name=west.arp.com name_server=10.0.1.10,10.0.1.20 search=arp.com,east.arp.com}</code>   |
|  |          |   | <hr/> <p><b>Note</b> - Choose only one value for <code>name_service</code>. Include either, both, or neither of the <code>domain_name</code> and <code>name_server</code> keywords, as needed. If neither keyword is used, omit the brackets {}.</p> <hr/> |

---

# Using the Solaris Product Registry

The Product Registry tool is new in the Solaris 7 3/99 software release.

This section supplements the contents of the *Solaris 7 (Intel Platform Edition) Installation Library* and the *Solaris 7 (SPARC Platform Edition) Installation Library*.

The Solaris Product Registry is a tool to help users manage installed software. Once Solaris is installed, Product Registry provides a list of all software installed using Solaris Web Start 2.0 or the Solaris package management commands. To view the Product Registry, type `/usr/bin/prodreg` at the command line.

The Product Registry enables you to:

- View a list of installed and registered software and some software attributes
- Uninstall software
- Browse for and launch an installer

For more information about Web Start installation, see the *Solaris 7 (Intel Platform Edition) Installation Library* or the *Solaris 7 (SPARC Platform Edition) Installation Library*.

## What Is in the Product Registry?

The Solaris Product Registry lists all software installed using Solaris Web Start 2.0 or the Solaris package management commands.

The main window, Figure 3-1, consists of three areas of information: installed, registered and removed software, standard attributes of the currently selected software, and customized attributes and attributes internal to the registered software.

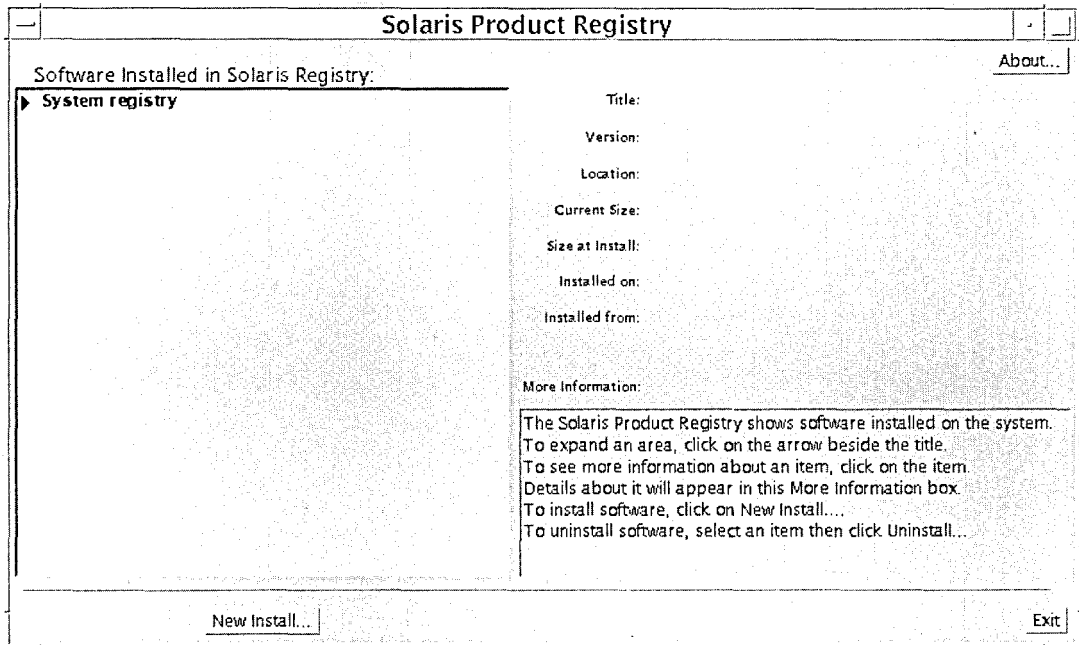


Figure 3-1 Solaris Product Registry Initial Configuration

To view the items in the Product Registry, click the triangle to the left of “System registry.” Notice that the triangle changes from pointing to the right to pointing down. You can expand any item in the Registry whose triangle points to the right in this manner. You can collapse any item whose triangle is pointing down by clicking on the triangle. An item with a square to its left cannot be expanded or collapsed.

“Solaris 7 v2.7 (SunOS 5.7) [0]” under “Software Installed in Solaris Registry” (see Figure 3-2) always contains two items: the configuration cluster you chose when installing Solaris and “additional system software.” The configuration cluster is one of Core, End User, Developer, or Entire Distribution. The “additional system software” item contains Solaris products that are not part of the configuration cluster you chose. Additionally, “unclassified software” contains any package that you installed using the `pkgadd` command that is not a Solaris product or part of the configuration cluster.

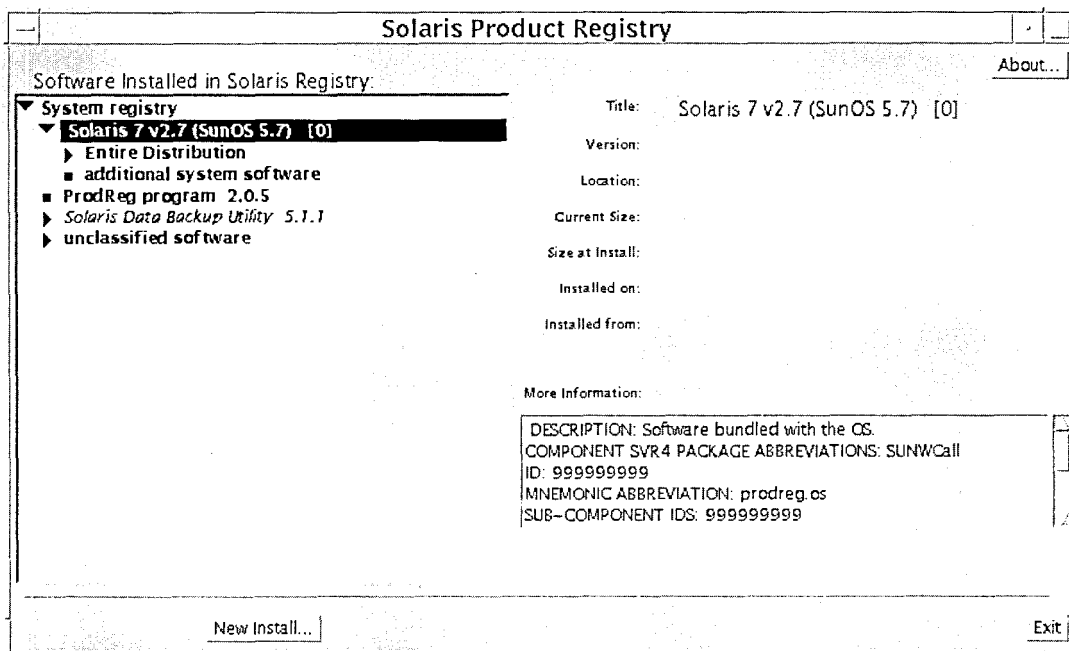


Figure 3-2 Solaris Product Registry Expanded

## Product Registry Attributes Section

Product attributes appear above the “More Information:” box in the Product Registry window. For Web Start-installed product items, the Registry contains values for at least Title, Version, Location, and Installed on. Items in an expanded list under a product or cluster inherit the version information of the product. Click on an item to view its attribute values.

## Products That Have Been Removed

Sometimes an item appears in the Product Registry window but the corresponding software has been removed by using the `pkgrm` command. In this case, the message “Missing files in one or more components” appears under the “Installed from:” attribute (see Figure 3-3). You can either re-install the software using the `pkgadd` command or, using the Registry, you can remove it.

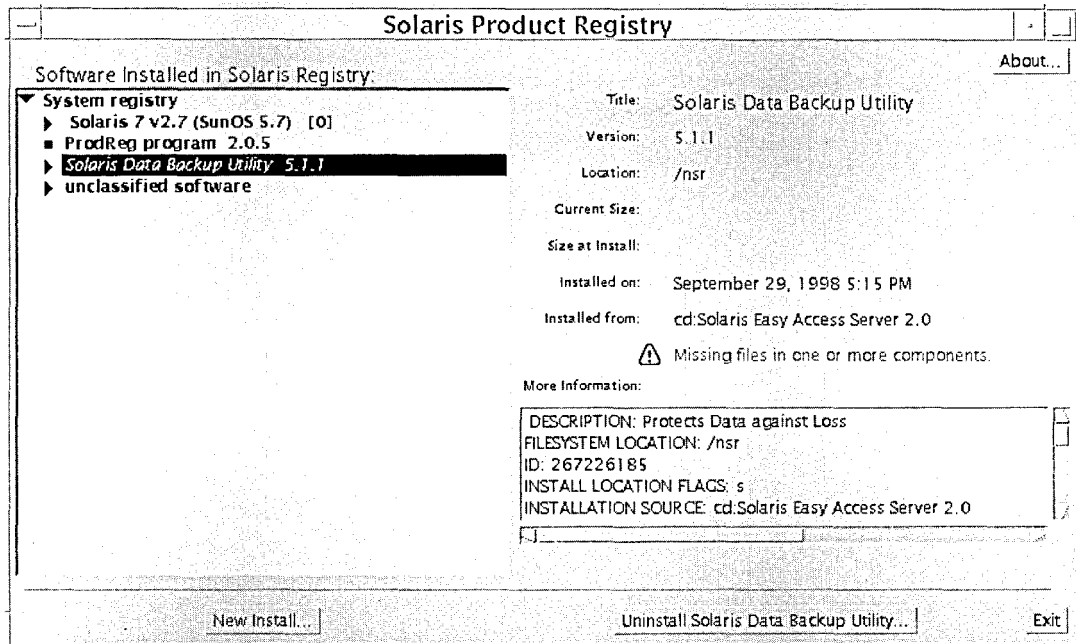


Figure 3-3 Missing Files Icon in Solaris Product Registry

## Viewing Registered Software, Uninstalling, and Launching an Installer

This section explains how to perform the following tasks:

- View a list of installed and registered software and some software attributes
- Uninstall software
- Browse for and launch an installer

### ▼ To View Registered Software

You can use the Solaris Product Registry to view a list of installed and registered software. You can also view attributes of software items in the list.

1. If the Registry is not already running, start it by entering the following command:

```
/usr/bin/prodreg
```

The Registry main window appears, displaying the System Registry item. Click on the triangle to its left to view the list of installed and registered software.

2. **If you wish to view software attributes, select the software by clicking its name in the software list.**

The Registry displays attribute information for the selected software.

## ▼ To Uninstall Software

1. **If the Registry is not already running, start it by entering the following command:**

```
/usr/bin/prodreg
```

The Registry main window appears, displaying the System Registry item. Click on the triangle to its left to view the list of installed and registered software.

Most users need only enter the `prodreg` command to start the Registry.

2. **On the Registry main window, select the software to uninstall by clicking its name in the software list.**
3. **Read the software attributes to make sure this is the software you want to uninstall.**
4. **Click the Uninstall button at the bottom of the Registry main window.**

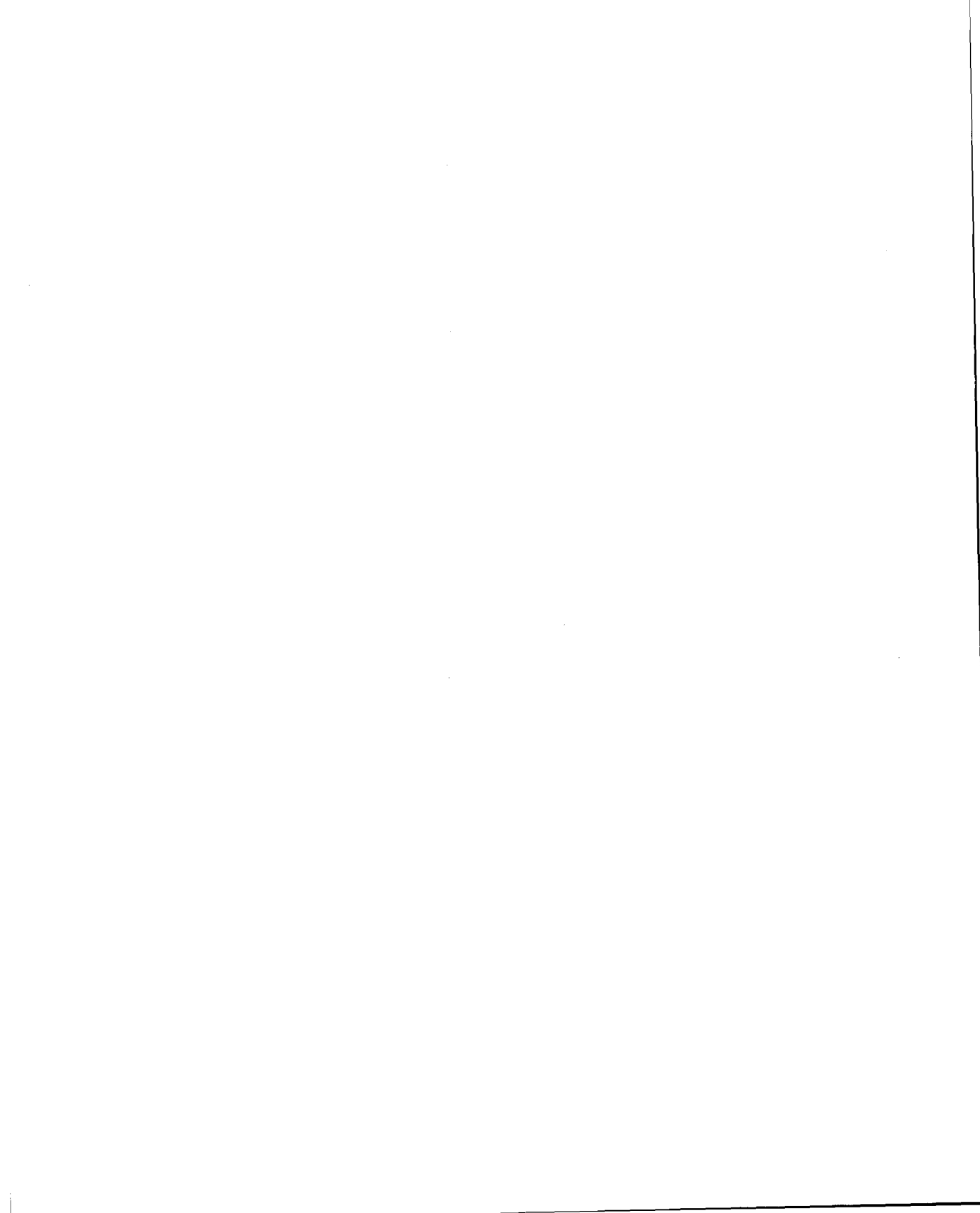
## ▼ To Launch an Installer From the Registry

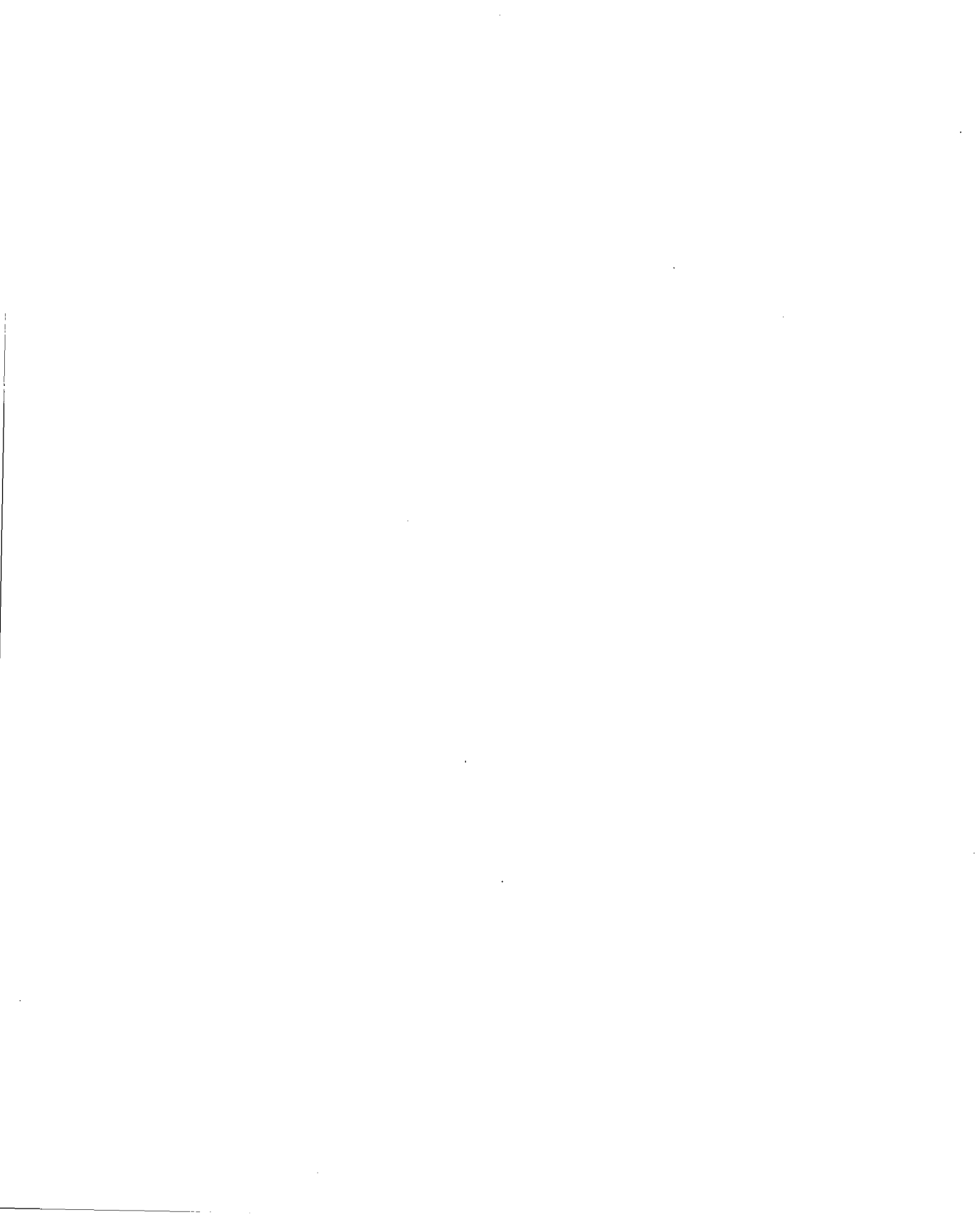
1. **If the Registry is not already running, start it by entering the following command:**

```
/usr/bin/prodreg
```

Most users need only enter the `prodreg` command to start the Registry.

2. **Click the New Install button at the bottom of the Registry main window.**  
The Registry displays the Select Installer File Selection Box, which initially points to the `/cdrom` directory.
3. **Use the Select Installer dialog to browse for the installer you want to launch.**
4. **When you find the installer you want to launch, click its name in the Files list.**
5. **To launch the installer, click OK.**







1

